

CHINT ENERGY METER

DDSU666 Single Phase DIN-Rail Meter

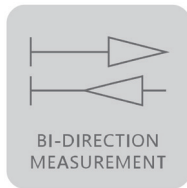
DTSU666 Three Phase DIN-Rail Meter



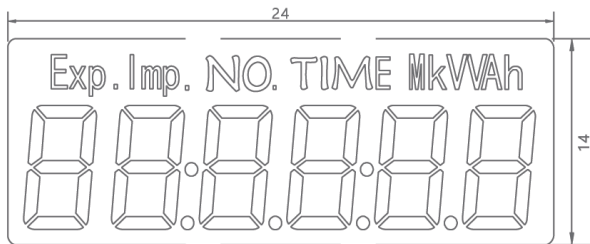
FUNCTIONS

- LCD Display
- Bi-Direction Measurement
- DIN-Rail Installation

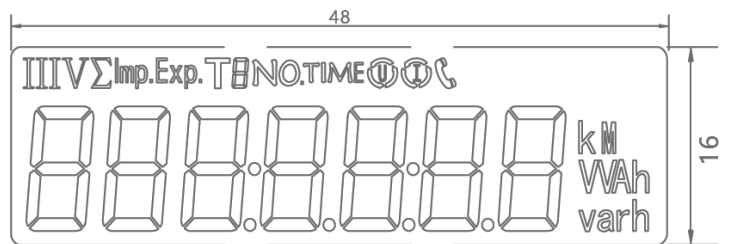
FEATURES



LCD INDICATION

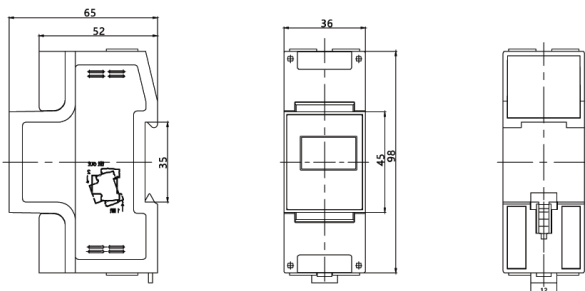


DDSU666 - Units: mm

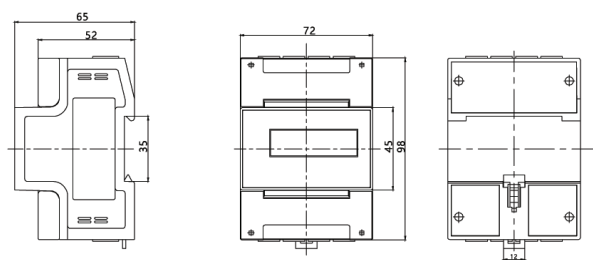


DTSU666 - Units: mm

ENERGY METER DIMENSIONS



DDSU666 - Units: mm



DTSU666 - Units: mm

SPECIFICATIONS

DDSU666
Single Phase DIN-Rail Meter

DTSU666
Three Phase DIN-Rail Meter

MEASUREMENT

Compliant with	IEC60252-11 IEC62053-21	IEC60252-11 IEC62053-21
Connection type	1P2W	3P4W
Accuracy	Class 1.0 for active	Class 1.0 for active

Voltage

Nominal voltage (Un)	120V, 220V, 230V, 240V	3x220/380V, 3x57.7/100V
Operating range	0.7Un ~ 1.2Un	0.7Un ~ 1.2Un
Power consumption	≤1W, 5VA	≤1W, 5VA

Current

CT	1.5(6)A	1.5(6)A
DC	5(80)A	5(80)A

Frequency

Frequency	50Hz or 60Hz	50Hz or 60Hz
-----------	--------------	--------------

LCD Display

Display	6 characters of 6 segment display	7 characters of 7 segment display
Digital size	5.3x2.8 mm	5.3x2.8 mm

LED Display

	Number of flashes per kWh	Number of flashes per kWh
--	---------------------------	---------------------------

Measured Values

Total kWh	Total kWh
	Total kvarh
Instantaneous kW	Instantaneous kW, kvar
Instantaneous Irms, Vrms, frequency, power factor	Instantaneous Irms, Vrms, frequency, power factor

Communications

Interface	RS485	RS485
Protocol	Modbus and DL/T	Modbus and DL/T

Environmental

Operating range limit	-40°C to +75°C	-40°C to +75°C
Storage range limit	-40°C to +80°C	-40°C to +80°C
Relative humidity	≤ 95%RH	≤ 95%RH
Ingress protection	IP54	IP54

Dimensions and Weight

Dimensions	98x65x36 mm	98x65x72 mm
Weight	0.2kg (Approx.)	0.4kg (Approx.)



Powered by Louwman Group